



**COMMONWEALTH OF KENTUCKY
TRANSPORTATION CABINET**
Frankfort, Kentucky 40622
www.transportation.ky.gov/

Matthew G. Bevin
Governor

Greg Thomas
Secretary

September 21, 2017

CALL NO. 105
CONTRACT ID NO. 171035
ADDENDUM # 1

Subject: Boone County, STPM 5138 (066)
Letting September 29, 2017

- (1) Revised - Plans - R1, R2C, R2D, R7, R25, R42A
- (2) Revised - Bid Items - Pages 173-175 of 175

Proposal revisions are available at <http://transportation.ky.gov/Construction-Procurement/>.

Plan revisions are available at <http://www.lynnimaging.com/kytransportation/>.

If you have any questions, please contact us at 502-564-3500.

Sincerely,

A handwritten signature in cursive script that reads "Rachel Mills".

Rachel Mills, P.E.
Director
Division of Construction Procurement

RM:ks
Enclosures



An Equal Opportunity Employer M/F/D

COUNTY OF	ITEM NO.	SHEET NO.
BOONE	06-0412.00	RI

Commonwealth of Kentucky DEPARTMENT OF HIGHWAYS

PLANS OF PROPOSED PROJECT

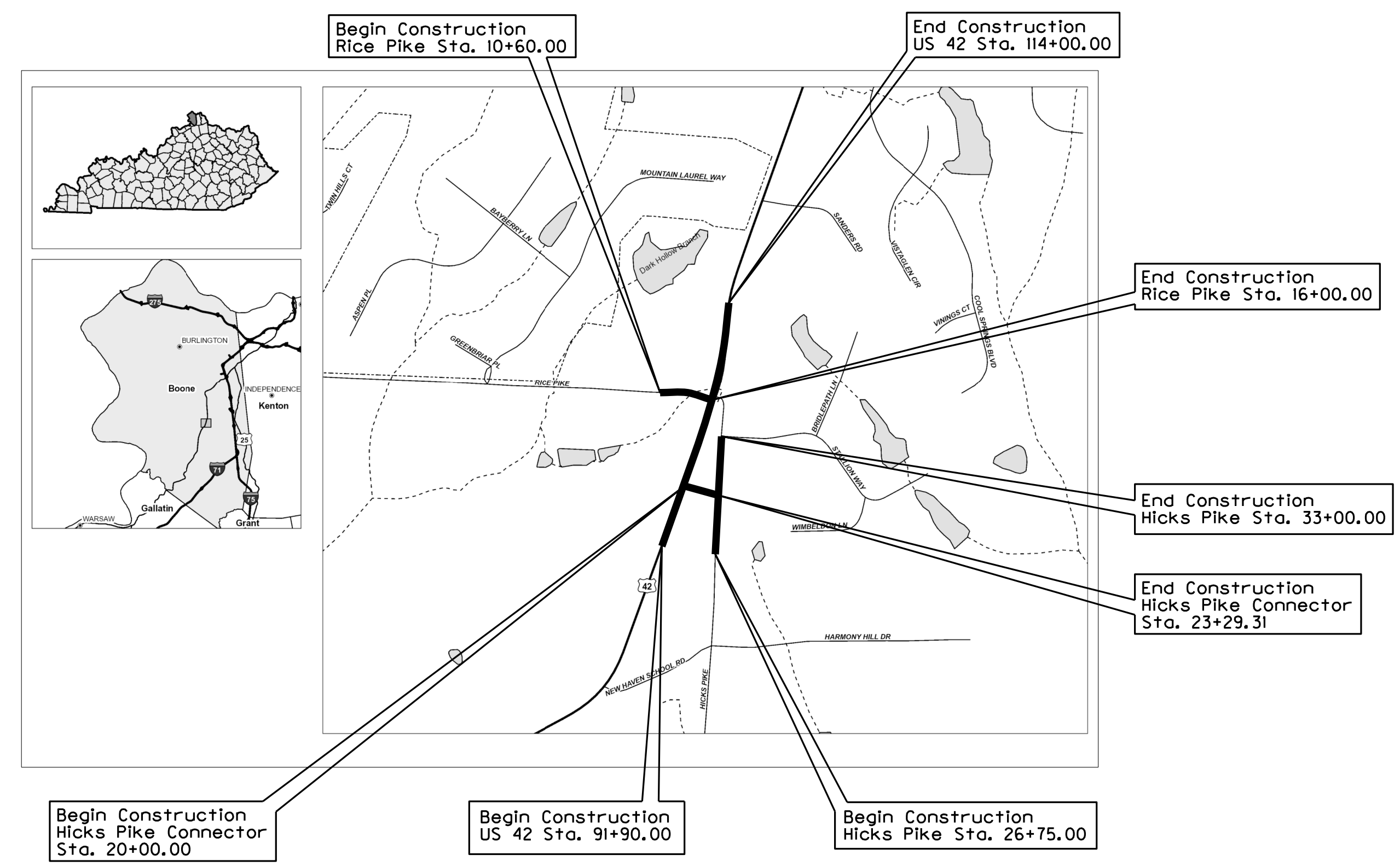
Boone County US 42 AT RICE PIKE STMP 5138 (066)



SHEET NO.	DESCRIPTION
R1	LAYOUT SHEET
R1a	RIGHT OF WAY REVISION SHEET
R2 - R2g	TYPICAL SECTIONS-SUMMARY OF QUANTITIES AND GENERAL NOTE SHEET
R3 - R19	PLAN AND PROFILE SHEETS
R20 - R21	RIGHT OF WAY SUMMARY SHEETS
R22	RIGHT OF WAY STRIP MAP SHEETS
R23 - R24e	DETAIL SHEETS
R25 - R30	TRAFFIC CONTROL SHEETS
R31 - R38	EROSION CONTROL SHEETS
R39 - R40	COORDINATE CONTROL SHEETS
R41	GEOTECHNICAL NOTES
R42 - R44	PIPE DRAINAGE SHEETS
T1	SIGNING PLAN SHEET
T2	SIGNING DETAIL SHEET
T3	SIGNING SPECIFICATION SHEET

SHEETS NOT INCLUDED IN TOTAL SHEETS
R2a - R2f, R23a, R24 - R24d, R42a, X2 - X29

STANDARD DRAWINGS			
NUMBER			
RBM-115-10	RDI-020-09	RDP-007-04	RGX-001-06
RBB-003-08	RDI-021-01	RDP-010-09	RGX-005-06
RDB-105-06	RDI-025-05	RDX-210-03	RGX-010-04
RDB-106-05	RDI-026-01	RDX-215-01	RPM-110-07
RDB-150	RDI-035-02	RDX-220-05	TPM-155-02
RDB-160-02	RDP-001-06	RDX-225-01	TPM-165
RDD-040-05	RDP-005-05	RDX-230-01	TTC-100-04
RDI-001-10	RDP-006-04	RGS-001-07	TTC-135-02
SEPIA 005			
SEPIA 006			
SEPIA 011			



THIS PROJECT IS OFF THE NH SYSTEM

THESE PLANS ARE FOR GRADE,
DRAIN, AND SURFACING

THE CONTROL OF ACCESS ON THIS
PROJECT SHALL BE BY PERMIT

DESIGN CRITERIA

CLASS OF HIGHWAY State
 TYPE OF TERRAIN Rolling
 DESIGN SPEED 45 MPH, 35 MPH
 REQUIRED NPSD _____
 REQUIRED PSD _____
 LEVEL OF SERVICE _____
 ADT PRESENT (2014) 9187
 ADT FUTURE () _____
 DHV _____
 D % _____
 T % _____

GEOGRAPHIC COORDINATES
 LATITUDE 38° DEGREES 55' MINUTES 19.01" SECONDS NORTH
 LONGITUDE 84° DEGREES 40' MINUTES 42.21" SECONDS WEST

DESIGNED

% RESTRICTED SD _____
 LEVEL OF SERVICE _____
 MAX. DISTANCE W/O PASSING _____

US 42		RICE PIKE		HICKS PIKE		HICKS PIKE CONNECTOR	
LENGTH <u>2.210</u>	LIN. FT. <u>0.418</u> MILES	LENGTH <u>540</u>	LIN. FT. <u>0.102</u> MILES	LENGTH <u>625</u>	LIN. FT. <u>0.118</u> MILES	LENGTH <u>329.31</u>	LIN. FT. <u>0.062</u> MILES
ADDED _____	DEDUCTED _____	ADDED _____	DEDUCTED _____	ADDED _____	DEDUCTED _____	ADDED _____	DEDUCTED _____
FOR EQUALITIES _____		FOR EQUALITIES _____		FOR EQUALITIES _____		FOR EQUALITIES _____	
NOT INCLUDED _____		NOT INCLUDED _____		NOT INCLUDED _____		NOT INCLUDED _____	
RAILROAD CROSSINGS NO. _____	LIN. FT. _____	RAILROAD CROSSINGS NO. _____	LIN. FT. _____	RAILROAD CROSSINGS NO. _____	LIN. FT. _____	RAILROAD CROSSINGS NO. _____	LIN. FT. _____
BRIDGES _____	LIN. FT. _____	BRIDGES _____	LIN. FT. _____	BRIDGES _____	LIN. FT. _____	BRIDGES _____	LIN. FT. _____

LAYOUT MAP

**Commonwealth of Kentucky
DEPARTMENT OF HIGHWAYS
COUNTY OF
BOONE**

ITEM NO. 06-0412.00
 PROJECT STPM 5138 (066)
 NUMBER: FD52 008 0042 008-009
 LETTING DATE: _____
 RECOMMENDED BY: Mike Bezold P.E. DATE: 01/20/16
 PROJECT MANAGER
 PLAN APPROVED BY: [Signature] DATE: 10-06-2017
 STATE HIGHWAY ENGINEER

FILE NAME: C:\PWORK\SCOTT.GABBARD\114233\RO0100L5.DGN
 USER: scott.gabbard
 DATE PLOTTED: September 20, 2017
 E-SHEET NAME: RO0100L5
 MicroStation v8.11.9.832

COUNTY OF	ITEM NO.	SHEET NO.
BOONE	06-0412.00	RI

Commonwealth of Kentucky DEPARTMENT OF HIGHWAYS

PLANS OF PROPOSED PROJECT

Boone County US 42 AT RICE PIKE STMP 5138 (066)

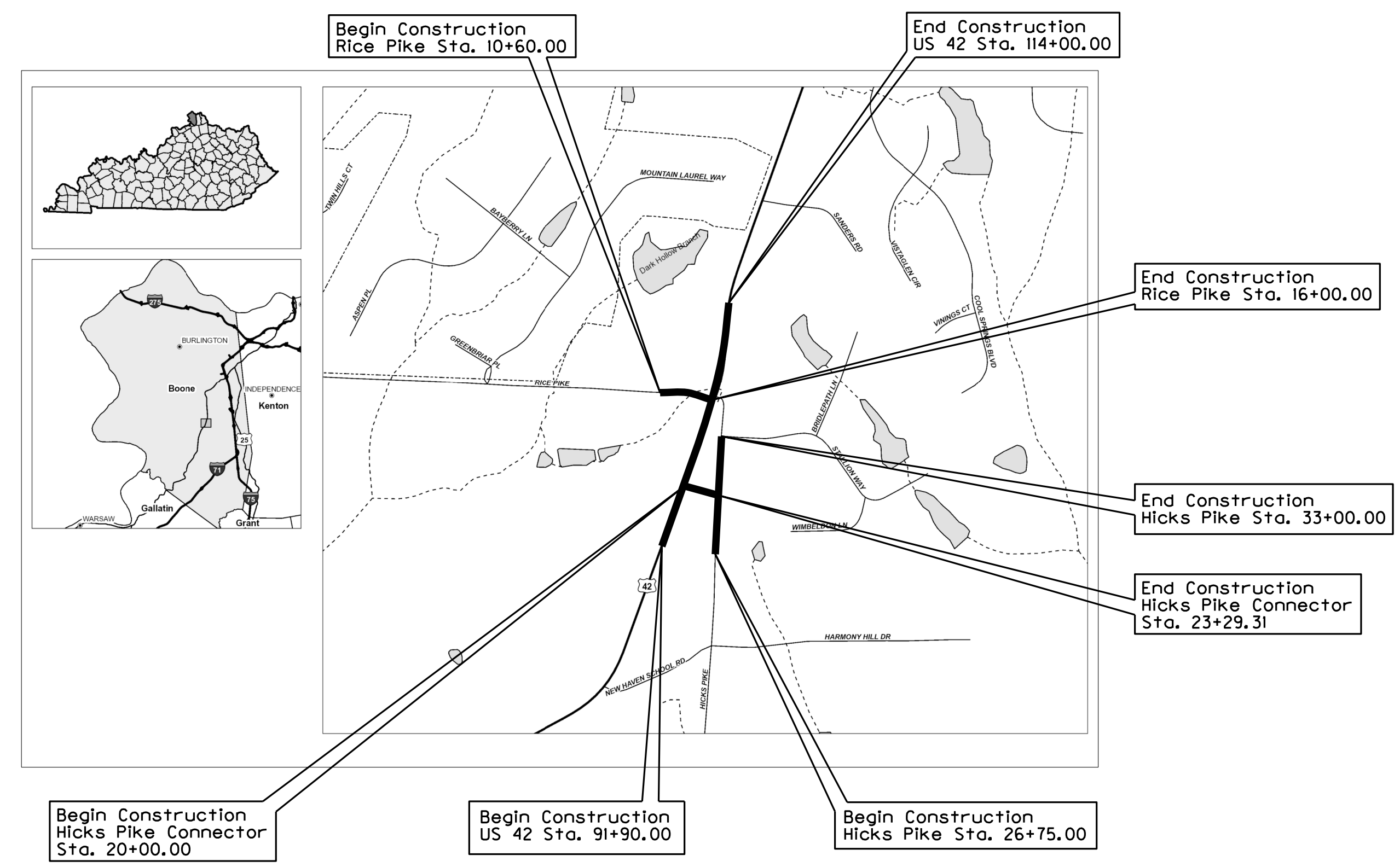


SHEET NO.	DESCRIPTION
R1	LAYOUT SHEET
R1a	RIGHT OF WAY REVISION SHEET
R2 - R2g	TYPICAL SECTIONS-SUMMARY OF QUANTITIES AND GENERAL NOTE SHEET
R3 - R19	PLAN AND PROFILE SHEETS
R20 - R21	RIGHT OF WAY SUMMARY SHEETS
R22	RIGHT OF WAY STRIP MAP SHEETS
R23 - R24e	DETAIL SHEETS
R25 - R30	TRAFFIC CONTROL SHEETS
R31 - R38	EROSION CONTROL SHEETS
R39 - R40	COORDINATE CONTROL SHEETS
R41	GEOTECHNICAL NOTES
R42 - R44	PIPE DRAINAGE SHEETS
T1	SIGNING PLAN SHEET
T2	SIGNING DETAIL SHEET
T3	SIGNING SPECIFICATION SHEET

Added Sheet Number

SHEETS NOT INCLUDED IN TOTAL SHEETS
R2a - R2f, R23a, R24 - R24d, R42a, X1 - X29

STANDARD DRAWINGS			
NUMBER			
RBM-115-10	RDI-020-09	RDP-007-04	RGX-001-06
RBB-003-08	RDI-021-01	RDP-010-09	RGX-005-06
RDB-105-06	RDI-025-05	RDX-210-03	RGX-010-04
RDB-106-05	RDI-026-01	RDX-215-01	RPM-110-07
RDB-150	RDI-035-02	RDX-220-05	TPM-155-02
RDB-160-02	RDP-001-06	RDX-225-01	TPM-165
RDD-040-05	RDP-005-05	RDX-230-01	TTC-100-04
RDI-001-10	RDP-006-04	RGS-001-07	TTC-135-02
SEPIA 005			
SEPIA 006			
SEPIA 011			



THIS PROJECT IS OFF THE NH SYSTEM

THESE PLANS ARE FOR GRADE,
DRAIN, AND SURFACING

THE CONTROL OF ACCESS ON THIS
PROJECT SHALL BE BY PERMIT

DESIGN CRITERIA

CLASS OF HIGHWAY State
 TYPE OF TERRAIN Rolling
 DESIGN SPEED 45 MPH, 35 MPH
 REQUIRED NPSD _____
 REQUIRED PSD _____
 LEVEL OF SERVICE _____
 ADT PRESENT (2014) 9187
 ADT FUTURE () _____
 DHV _____
 D % _____
 T % _____

GEOGRAPHIC COORDINATES

LATITUDE 38° DEGREES 55' MINUTES 19.01" SECONDS NORTH
 LONGITUDE 84° DEGREES 40' MINUTES 42.21" SECONDS WEST

DESIGNED

% RESTRICTED SD _____
 LEVEL OF SERVICE _____
 MAX. DISTANCE W/O PASSING _____

US 42		RICE PIKE		HICKS PIKE		HICKS PIKE CONNECTOR	
LENGTH <u>2,210</u> LIN. FT.	<u>0.418</u> MILES	LENGTH <u>540</u> LIN. FT.	<u>0.102</u> MILES	LENGTH <u>625</u> LIN. FT.	<u>0.118</u> MILES	LENGTH <u>329.31</u> LIN. FT.	<u>0.062</u> MILES
ADDED _____	DEDUCTED _____	ADDED _____	DEDUCTED _____	ADDED _____	DEDUCTED _____	ADDED _____	DEDUCTED _____
FOR EQUALITIES _____ LIN. FT.		FOR EQUALITIES _____ LIN. FT.		FOR EQUALITIES _____ LIN. FT.		FOR EQUALITIES _____ LIN. FT.	
NOT INCLUDED _____		NOT INCLUDED _____		NOT INCLUDED _____		NOT INCLUDED _____	
RAILROAD CROSSINGS NO. _____	LIN. FT. _____	RAILROAD CROSSINGS NO. _____	LIN. FT. _____	RAILROAD CROSSINGS NO. _____	LIN. FT. _____	RAILROAD CROSSINGS NO. _____	LIN. FT. _____
BRIDGES _____	LIN. FT. _____	BRIDGES _____	LIN. FT. _____	BRIDGES _____	LIN. FT. _____	BRIDGES _____	LIN. FT. _____

LAYOUT MAP

**Commonwealth of Kentucky
DEPARTMENT OF HIGHWAYS
COUNTY OF
BOONE**

ITEM NO. 06-0412.00
 PROJECT STPM 5138 (066)
 NUMBER: FD52 008 0042 008-009
 LETTING DATE: _____

RECOMMENDED BY: Mike Bezold P.E. DATE: 01/20/16
PROJECT MANAGER

PLAN APPROVED BY: _____ DATE: _____
STATE HIGHWAY ENGINEER

FILE NAME: C:\PWORK\SCOTT.GABBARD\114233\RO0100L5.DGN
 USER: scott.gabbard
 DATE PLOTTED: September 20, 2017
 E-SHEET NAME: RO0100L5
 MicroStation v8.11.9.832

GENERAL SUMMARY

COUNTY OF	ITEM NO.	SHEET NO.
BOONE	06-0412.00	R2c

ITEM	DESCRIPTION	UNIT	US 42	RICE PIKE	HICKS PIKE	HICKS PIKE CONNECTOR	ENTRANCES	TOTALS
01585	REMOVE DROP BOX INLET	EACH	1					1
02014	BARRICADE-TYPE III	EACH						13
02091	REMOVE PAVEMENT	SO YD	1501					1501
02159	TEMPORARY DITCH	LF						1900
02160	CLEAN TEMPORARY DITCH	LF						950
02200	ROADWAY EXCAVATION	③ CU YD						5924
02230	EMBANKMENT IN PLACE	CU YD						38871
02242	WATER	① M. GAL						50
02429	RIGHT OF WAY MONUMENT TY 1	EA	26					26
02545	CLEARING & GRUBBING	② LS						1
02562	TEMPORARY SIGNS	SO FT						350
02568	MOBILIZATION	LS						1
02569	DEMOBILIZATION	LS						1
02585	EDGE KEY	LF	48.8	18.7	37.5			105
02600	FABRIC GEOTEXTILE TYPE IV FOR PIPE	④ SO YD	264	297	172		917	1650
02650	MAINTAIN & CONTROL TRAFFIC	LS						1
02653	LANE CLOSURE	EACH						2
02671	PORTABLE CHANGEABLE MESSAGE SIGN	EACH						6
02676	MOBILIZATION FOR MILL & TEXT	LS						1
02690	SAFELADING	CU YD	12					12
02697	MILLED RUMBLE STRIPS	LF	4420					4420
02701	TEMPORARY SILT FENCE	LF						1900
02703	SILT TRAP TYPE A	EA						5
02704	SILT TRAP TYPE B	EA						50
02705	SILT TRAP TYPE C	EA						25
02706	CLEAN SILT TRAP TYPE A	EA						5
02707	CLEAN SILT TRAP TYPE B	EA						50
02708	CLEAN SILT TRAP TYPE C	EA						25
02726	STAKING	LS						1
05952	TEMPORARY MULCH	SO YD						37510
05953	TEMPORARY SEEDING & PROTECTION	SO YD						28072
05963	INITIAL FERTILIZER	TON						2
05964	FERTILIZER 20-10-10	TON						3
05985	SEEDING AND PROTECTION	SO YD						21929
05990	SODDING	SO YD						17867
06405	SBM ALUMINUM PANEL SIGNS	⑥ SQ YD						48
06411	STEEL POST TYPE 2	LF						90
06510	PAVEMENT STRIPING-TEMP PAINT - 4 IN	LF						6000
06514	PAVEMENT STRIPING-PERM PAINT - 4 IN	LF						12577
06530	PAVEMENT STRIPING REMOVAL - 4 IN	LF						10000
06568	PAVEMENT MARKING-THERMO STOP BAR - 24 INCH	LF		32		64		96
06569	PAVEMENT MARKING-THERMO CROSS-HATCH	SQ FT	5140					5140
06574	PAVEMENT MARKING-THERMO CURV ARROW	EACH	15					15
06593	PAVEMENT MARKER TYPE V-B Y/R	EACH	40					40
20411ED	LAW ENFORCEMENT OFFICER	hour						12
23274EN1IF	TURF REINFORCEMENT MAT 1 (SEE SPECIAL NOTE 1IF SHEET R2G)	⑤ SQ YD						4926
10020NS	FUEL ADJUSTMENT	DOLL						23777
10030NS	ASPHALT ADJUSTMENT	DOLL						27934

NOTES:

- ① FOR CONTROLLING DUST CAUSED BY M.O.T. ONLY
- ② APPROXIMATE 8.7 ACRES FOR CLEARING AND GRUBBING
- ③ 3310 SQ YDS EMBANKMENT BENCHING AND 2614 SQ YDS TRANSVERSE BENCHING
- ④ QUANTITIES CARRIED OVER FROM PIPE DRAINAGE SUMMARY
- ⑤ QUANTITIES INCLUDES QUANTITY FROM PERFORATED PIPE DRAINAGE SUMMARY
- ⑥ REFERENCE T00100SN.DGN FOR TYPES

EARTHWORK CALCULATION ARE FOR DESIGN PURPOSES AND ARE SHOWN FOR INFORMATIONAL PURPOSES ONLY

ASSUMPTIONS FOR SHRINKAGE AND SWELL FACTORS SHALL BE THE CONTRACTOR'S RESPONSIBILITY

US 42 MAINLINE

*Earthwork Quantities
Sta. 91+90 to 114+00*

Emb Bench = 3204
Com = 5254
Emb = 18731

RICE PIKE

*Earthwork Quantities
Sta. 10+60 to 16+00*

Emb Bench = 106
Com = 306
Emb = 10879

HICKS PIKE

*Earthwork Quantities
Sta. 26+75 to 33+00*

Emb Bench = 0
Com = 116
Emb = 4351

HICKS PIKE CONNECTOR

*Earthwork Quantities
Sta. 20+00 to 23+29.31*

Emb Bench = 0
Com = 0
Emb = 4910

GENERAL SUMMARY

MicroStation v8.11.9.832 E-SHEET NAME: R0020CSU DATE PLOTTED: September 20, 2017 USER: scott.gabbard FILE NAME: G:\PWORK\SCOTT.GABBARD\114233\RO020CSU_ADDENDUM.DGN

GENERAL SUMMARY

COUNTY OF	ITEM NO.	SHEET NO.
BOONE	06-0412.00	R2c

ITEM	DESCRIPTION	UNIT	US 42	RICE PIKE	HICKS PIKE	HICKS PIKE CONNECTOR	ENTRANCES	TOTALS
01585	REMOVE DROP BOX INLET	EACH	1					1
02014	BARRICADE-TYPE III	EACH						13
02091	REMOVE PAVEMENT	SO YD	1501					1501
02159	TEMPORARY DITCH	LF						1900
02160	CLEAN TEMPORARY DITCH	LF						950
02200	ROADWAY EXCAVATION	③ CU YD						5924
02230	EMBANKMENT IN PLACE	CU YD						38871
02242	WATER	① M. GAL						50
02429	RIGHT OF WAY MONUMENT TY 1	EA	26					26
02545	CLEARING & GRUBBING	② LS						1
02562	TEMPORARY SIGNS	SO FT						350
02568	MOBILIZATION	LS						1
02569	DEMOBILIZATION	LS						1
02585	EDGE KEY	LF	48.8	18.7	37.5			105
02600	FABRIC GEOTEXTILE TYPE IV FOR PIPE	④ SO YD	264	297	172		917	1650
02650	MAINTAIN & CONTROL TRAFFIC	LS						1
02653	LANE CLOSURE	EACH						2
02671	PORTABLE CHANGEABLE MESSAGE SIGN	EACH						6
02676	MOBILIZATION FOR MILL & TEXT	LS						1
02690	SAFEOLOADING	CU YD	12					12
02697	MILLED RUMBLE STRIPS	LF	4420					4420
02701	TEMPORARY SILT FENCE	LF						1900
02703	SILT TRAP TYPE A	EA						5
02704	SILT TRAP TYPE B	EA						50
02705	SILT TRAP TYPE C	EA						25
02706	CLEAN SILT TRAP TYPE A	EA						5
02707	CLEAN SILT TRAP TYPE B	EA						50
02708	CLEAN SILT TRAP TYPE C	EA						25
02726	STAKING	LS						1
05952	TEMPORARY MULCH	SO YD						37510
05953	TEMPORARY SEEDING & PROTECTION	SO YD						28072
05963	INITIAL FERTILIZER	TON						2
05964	FERTILIZER 20-10-10	TON						3
05985	SEEDING AND PROTECTION	SO YD						21929
05990	SODDING	SO YD						17867
06405	SBM ALUMINUM PANEL SIGNS	⑥ SO YD						48
06411	STEEL POST TYPE 2	LF						90
06510	PAVEMENT STRIPING-TEMP PAINT - 4 IN	LF						6000
06514	PAVEMENT STRIPING-PERM PAINT - 4 IN	LF						12577
06530	PAVEMENT STRIPING REMOVAL - 4 IN	LF						10000
06568	PAVEMENT MARKING-THERMO STOP BAR - 24 INCH	LF		32		64		96
06569	PAVEMENT MARKING-THERMO CROSS-HATCH	SO FT	5140					5140
06574	PAVEMENT MARKING-THERMO CURV ARROW	EACH	15					15
06583	PAVEMENT MARKER TYPE V-B VXR	EACH	40					40
20411ED	LAW ENFORCEMENT OFFICER	⑤ HOUR						12
23274ENHP	PURP REINFORCEMENT MAT (SEE SPECIAL NOTE ON SHEET R26)	⑤ SO YD						4928
10020NS	FUEL ADJUSTMENT	DOLL						23777
10030NS	ASPHALT ADJUSTMENT	DOLL						27934

NOTES:

- ① FOR CONTROLLING DUST CAUSED BY M.O.T. ONLY
- ② APPROXIMATE 8.7 ACRES FOR CLEARING AND GRUBBING
- ③ 3310 SQ YDS EMBANKMENT BENCHING AND 2614 SQ YDS TRANSVERSE BENCHING
- ④ QUANTITIES CARRIED OVER FROM PIPE DRAINAGE SUMMARY
- ⑤ QUANTITIES INCLUDES QUANTITY FROM PERFORATED PIPE DRAINAGE SUMMARY
- ⑥ REFERENCE T00100SN.DGN FOR TYPES

EARTHWORK CALCULATION ARE FOR DESIGN PURPOSES AND ARE SHOWN FOR INFORMATIONAL PURPOSES ONLY

ASSUMPTIONS FOR SHRINKAGE AND SWELL FACTORS SHALL BE THE CONTRACTOR'S RESPONSIBILITY

US 42 MAINLINE

Earthwork Quantities
Sta. 91+90 to 114+00

Emb Bench = 3204
Com = 5254
Emb = 18731

RICE PIKE

Earthwork Quantities
Sta. 10+60 to 16+00

Emb Bench = 106
Com = 306
Emb = 10879

HICKS PIKE

Earthwork Quantities
Sta. 26+75 to 33+00

Emb Bench = 0
Com = 116
Emb = 4351

HICKS PIKE CONNECTOR

Earthwork Quantities
Sta. 20+00 to 23+29.31

Emb Bench = 0
Com = 0
Emb = 4910

Revised bid code
02690 Safeloading
from 6 CY to 12 CY

Added Item Number 20411ED
for Law Enforcement Officers
during MOT

Corrected
Transposed
Quantities for Emb
Benching and Emb

FILE NAME: G:\PWORK\SCOTT_GABBARD\114233\ROO20CSU_ADDENDUM.DGN

USER: scott.gabbard
DATE PLOTTED: September 20, 2017

E-SHEET NAME: ROO20CSU

MicroStation v8.11.9.832

PIPE DRAINAGE SUMMARY

COUNTY OF	ITEM NO.	SHEET NO.
BOONE	06-0412.00	R2d

SHEET NO.	ITEM CODE	SKEW	COVER HEIGHT	DESIGN pH LEVEL	ENTRANCE PIPE 15 INCH	ENTRANCE PIPE 18 INCH	CULVERT PIPE 15 INCH	CULVERT PIPE 18 INCH	CULVERT PIPE 24 INCH	STORM SEWER PIPE 15 INCH	PIPE CULVERT HEADWALL 15 INCH	PIPE CULVERT HEADWALL 24 INCH	METAL END SECTION TYPE 1 18 INCH	HEADWALL PRECAST DRIVEWAY 15 INCH	S & F BOX INLET-OUTLET 18 INCH	S & F BOX INLET-OUTLET 24 INCH	DROP BOX INLET TYPE 3	CHANNEL LINING CLASS II	FABRIC GEOTEXTILE TYPE IV FOR PIPE	BORE AND JACK PIPE 24 INCH	PIPELINE INSPECTION	REMARKS					
UNIT TO BID	FT		LIN FT	LIN FT	LIN FT	LIN FT	LIN FT	LIN FT	LIN FT	EACH	EACH	EACH	EACH	EACH	EACH	EACH	TON	SO YD	LF	LF							
US 42																											
R5 104+40.00	30° LEFT	5.8							168								1	14	264	168	163						
R7 106+65.00		9.5					128																				
HICKS PIKE																											
R15 28+10.00		3.5							44									27	69		44						
R15 30+50.00	35° RIGHT	3.2						75							2			25	103		75						
RICE PIKE																											
R13 14+55.00	24° RIGHT	17.9							189									14	297		189						
ENTRANCES																											
US 42																											
R3 93+00 LT									32																		
R3 93+50 LT									26																		
R3 93+57 RT									32																		
R3 94+00 RT									28																		
R3 94+75 LT									31																		
R5 96+18 LT									52																		
R5 97+68 LT									28																		
R5 98+90 LT										196	1						2	6	247		196						
R5 99+31 RT									29																		
R5 100+58 RT									37																		
R9 110+00 RT									30																		
R9 110+13 LT									41																		
HICKS PIKE																											
R15 27+80 LT								40																			
R15 28+47 LT								28																			
R15 29+22 LT								32																			
R17 31+76 RT								41																			
TOTAL PROJECT									439		68	128	75	401	196	1	3	4	26	2	2	3	86	1650	168	667	

① SEE DETAIL SHEET R24B
 ② QUANTITY CARRIED OVER TO GENERAL SUMMARY

FILE NAME: G:\PWORK\SCOTT.GABBARD\114233\ROO20DSU_ADDENDUM.DGN
 USER: scott.gabbard
 DATE PLOTTED: September 19, 2017
 E-SHEET NAME: ROO20DSU
 MicroStation v8.11.9.832

PIPE DRAINAGE SUMMARY

COUNTY OF	ITEM NO.	SHEET NO.
BOONE	06-0412.00	R2d

SHEET NO.	ITEM CODE	SKEW	COVER HEIGHT	DESIGN pH LEVEL	ENTRANCE PIPE 15 INCH	ENTRANCE PIPE 18 INCH	CULVERT PIPE 15 INCH	CULVERT PIPE 18 INCH	CULVERT PIPE 24 INCH	STORM SEWER PIPE 15 INCH	PIPE CULVERT HEADWALL 15 INCH	PIPE CULVERT HEADWALL 24 INCH	METAL END SECTION TYPE 1 18 INCH	HEADWALL PRECAST DRIVEWAY 15 INCH	S & F BOX INLET-OUTLET 18 INCH	S & F BOX INLET-OUTLET 24 INCH	DROP BOX INLET TYPE 3	CHANNEL LINING CLASS II	FABRIC GEOTEXTILE TYPE IV FOR PIPE	BORE AND JACK PIPE 24 INCH	PIPELINE INSPECTION	REMARKS
UNIT TO BID	FT				LIN FT	LIN FT	LIN FT	LIN FT	LIN FT	LIN FT	EACH	EACH	EACH	EACH	EACH	EACH	EACH	TON	SO YD	LF	LF	
US 42																						
R5	104+40.00	50' LEFT	5.8	MEDIUM					168			1					1	14	264	168	163	
R7	106+65.00		9.5	MEDIUM			128															
HICKS PIKE																						
R15	28+10.00		3.5	MEDIUM					44									27	69		44	
R15	30+50.00	35' RIGHT	3.2	MEDIUM				75							2	2		25	103		75	
RICE PIKE																						
R13	14+55.00	24' RIGHT	17.9	MEDIUM					189			2						14	297		189	
ENTRANCES																						
US 42																						
R3	93+00 LT				32																	
R3	93+50 LT				26																	
R3	93+57 RT				32																	
R3	94+00 RT				28																	
R3	94+75 LT				31																	
R5	96+18 LT				52																	
R5	97+68 LT				28																	
R5	98+90 LT									196	1						2	6	247		196	
R5	99+31 RT				29																	
R5	100+58 RT				37																	
R9	110+00 RT				30																	
R9	110+13 LT				41																	
HICKS PIKE																						
R15	27+80 LT					40							2									
R15	28+47 LT					28							2									
R15	29+22 LT				32									2								
R17	31+76 RT				41										2							
TOTAL PROJECT					439	68	128	75	401	196	1	3	4	26	2	2	3	86	1650	168	667	

Added Bid Code
00461 15" Culvert
Pipe 128 LF

① SEE DETAIL SHEET R24B
② QUANTITY CARRIED OVER TO GENERAL SUMMARY

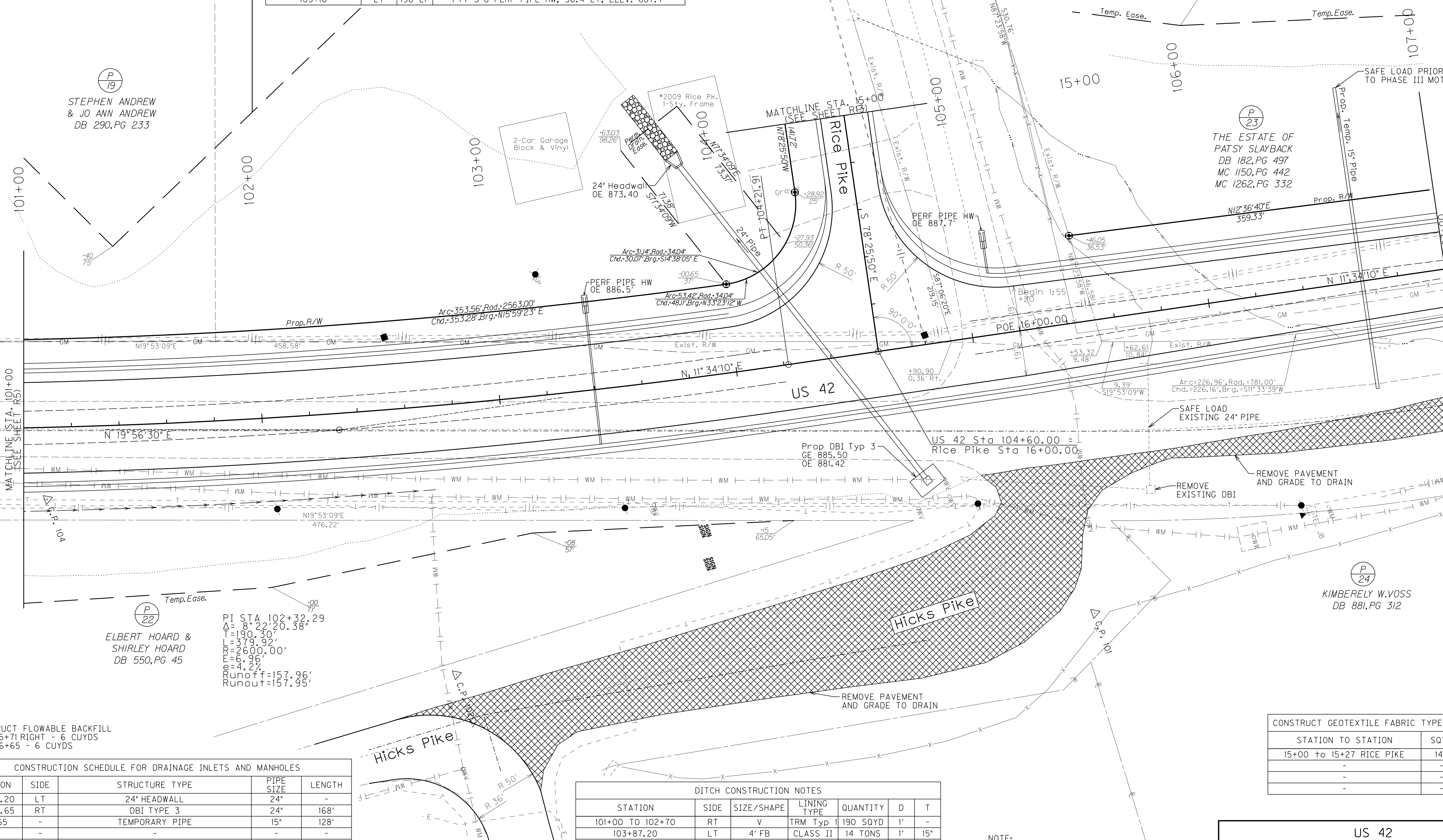
FILE NAME: G:\PWORK\SCOTT.GABBARD\114233\ROO20DSU_ADDENDUM.DGN
 USER: scott.gabbard
 DATE PLOTTED: September 19, 2017
 E-SHEET NAME: ROO20DSU
 MicroStation v8.11.9.832

CONSTRUCT PERFORATED PIPE UNDER DRAIN				
LOCATION	SIDE	8" PERF PIPE	REMARKS	
101+00 TO 104+70	RT	370 LF	1 8" CORE HOLE AT DBI STA 104+70	
107+00 TO 104+70	RT	230 LF	1 8" CORE HOLE AT DBI STA 104+70	
101+00 TO 103+40	LT	240 LF	10 LF 8" NON-PERF PIPE, 9 SOYD TRM TYP 1	
103+40	LT	-	1 TY 3-8 PERF PIPE HW, 33.0' LT, ELEV. 886.5'	
103+40	LT	45 LF	CONSTRUCT PERFORATED SUBGRADE DRAIN	
104+00 TO 103+40	LT	60 LF	-	
107+00 TO 105+10	LT	190 LF	10 LF 8" NON-PERF PIPE, 9 SOYD TRM TYP 1	
105+10	LT	190 LF	1 TY 3-8 PERF PIPE HW, 36.4' LT, ELEV. 887.7'	

FILE NAME: G:\PWORK\SCOTT_GABBARD\114233\ROOT00PL_ADDENDUM.DGN
 USER: scott.gabbard
 DATE PLOTTED: September 19, 2017
 E-SHEET NAME: ROOT00PL
 MicroStation v8.11.9.832

CONSENT RELEASE AREA
REMOVE TREES
GRADE TO DRAIN

(P 19)
STEPHEN ANDREW
& JO ANN ANDREW
DB 290, PG 233



(P 22)
ELBERT HOARD &
SHIRLEY HOARD
DB 550, PG 45

PI STA 102+32.29
 $\Delta = 8.22$
 $T = 190.30$
 $R = 79.92$
 $L = 2600.00'$
 $E = 6.96'$
 $e = 4.22'$
 Runoff = 157.96'
 Runout = 157.95'

CONSTRUCT FLOWABLE BACKFILL
STA 105+71 RIGHT - 6 CUYDS
STA 106+65 - 6 CUYDS

CONSTRUCTION SCHEDULE FOR DRAINAGE INLETS AND MANHOLES				
STATION	SIDE	STRUCTURE TYPE	PIPE SIZE	LENGTH
103+87.20	LT	24" HEADWALL	24"	-
104+72.65	RT	DBI TYPE 3	24"	168'
106+65	-	TEMPORARY PIPE	15"	128'
-	-	-	-	-
-	-	-	-	-

DITCH CONSTRUCTION NOTES						
STATION	SIDE	SIZE/SHAPE	LINING TYPE	QUANTITY	D	T
101+00 TO 102+70	RT	V	TRM Typ 1	190 SOYD	1'	-
103+87.20	LT	4' FB	CLASS II	14 TONS	1'	15"
-	-	-	-	-	-	-
-	-	-	-	-	-	-

CONSTRUCT GEOTEXTILE FABRIC TYPE IV	
STATION TO STATION	SQYD
15+00 to 15+27 RICE PIKE	148
-	-
-	-

NOTE:
REMOVE PAVEMENT AND
GRADE TO DRAIN 1340 SOYD
SCALE: 1" = 20'

US 42
PLAN SHEET ADDENDUM
STA. 101+00 TO STA. 107+00

CONSTRUCT PERFORATED PIPE UNDER DRAIN				
LOCATION	SIDE	8" PERF PIPE	REMARKS	
101+00 TO 104+70	RT	370 LF	1 8" CORE HOLE AT DBI STA 104+70	
107+00 TO 104+70	RT	230 LF	1 8" CORE HOLE AT DBI STA 104+70	
101+00 TO 103+40	LT	240 LF	10 LF 8" NON-PERF PIPE, 9 SOYD TMR TYP I	
103+40	LT	-	1 TY 3-8 PERF PIPE HW, 33.0' LT, ELEV. 886.5'	
103+40	LT	45 LF	CONSTRUCT PERFORATED SUBGRADE DRAIN	
104+00 TO 103+40	LT	60 LF		
107+00 TO 105+10	LT	190 LF	10 LF 8" NON-PERF PIPE, 9 SOYD TRM TYP I	
105+10	LT	190 LF	1 TY 3-8 PERF PIPE HW, 36.4' LT, ELEV. 887.7'	

FILE NAME: G:\PWORK\SCOTT_GABBARD\114233\ROOT700PL_ADDENDUM.DGN
 USER: scott.gabbard
 DATE PLOTTED: September 19, 2017
 E-SHEET NAME: ROOT700PL
 MicroStation v8.11.9.832

CONSENT RELEASE AREA
REMOVE TREES
GRADE TO DRAIN

(P 19)
STEPHEN ANDREW
& JO ANN ANDREW
DB 290, PG 233

2-Car Garage
Block & Vinyl

*2009 Rice Pk.
1-Story, Frame

Added 15" Pipe For
Temporary Drainage
During Construction

(P 23)
THE ESTATE OF
PATSY SLAYBACK
DB 182, PG 497
MC 1150, PG 442
MC 1262, PG 332

(P 24)
KIMBERLY W. VOSS
DB 881, PG 312

(P 22)
ELBERT HOARD &
SHIRLEY HOARD
DB 550, PG 45

PI STA 102+32.29
 $\Delta = 8.22$
 $T = 190.30$
 $R = 2600.00'$
 $E = 6.96'$
 $e = 4.22'$
 Runoff = 157.96'
 Runout = 157.95'

CONSTRUCT FLOWABLE BACKFILL
STA 105+71 RIGHT - 6 CUYDS
STA 106+65 - 6 CUYDS

CONSTRUCTION SCHEDULE FOR DRAINAGE INLETS AND MANHOLES				
STATION	SIDE	STRUCTURE TYPE	PIPE SIZE	LENGTH
103+87.20	LT	24" HEADWALL	24"	-
104+72.65	RT	DBI TYPE 3	24"	168'
106+65	-	TEMPORARY PIPE	15"	128'
-	-	-	-	-
-	-	-	-	-

DITCH CONSTRUCTION NOTES						
STATION	SIDE	SIZE/SHAPE	LINING TYPE	QUANTITY	D	T
101+00 TO 102+70	RT	V	TRM Typ I	190 SOYD	1'	-
103+87.20	LT	4' FB	CLASS II	14 TONS	1'	15'
-	-	-	-	-	-	-
-	-	-	-	-	-	-

CONSTRUCT GEOTEXTILE FABRIC TYPE IV	
STATION TO STATION	SQYD
15+00 to 15+27 RICE PIKE	148
-	-
-	-

NOTE:
REMOVE PAVEMENT AND
GRADE TO DRAIN 1340 SOYD
SCALE: 1" = 20'

US 42
PLAN SHEET ADDENDUM
STA. 101+00 TO STA. 107+00

GENERAL NOTES

- TRAFFIC SHALL BE MAINTAINED IN ACCORDANCE WITH THE MANUAL ON UNIFORM TRAFFIC CONTROL DEVICES, THE STANDARD SPECIFICATIONS FOR ROAD AND BRIDGE CONSTRUCTION AND THE STANDARD DRAWINGS, CURRENT EDITIONS.
- EXCEPT FOR THE ROADWAY AND TRAFFIC CONTROL BID ITEMS LISTED, ALL ITEMS OF WORK NECESSARY TO MAINTAIN AND CONTROL TRAFFIC WILL BE PAID AT THE LUMP SUM BID PRICE TO 'MAINTAIN AND CONTROL TRAFFIC' AS SET FORTH IN THE CURRENT STANDARD SPECIFICATIONS FOR ROAD AND BRIDGE CONSTRUCTION UNLESS OTHERWISE PROVIDED FOR IN THESE NOTES. THE LUMP SUM BID TO 'MAINTAIN AND CONTROL TRAFFIC' SHALL ALSO INCLUDE, BUT IS NOT LIMITED TO, THE FOLLOWING ITEMS AND OPERATIONS:
 - ALL GRADING AND NECESSARY DRAINAGE (UNLESS A BID ITEM FOR DETOUR CONSTRUCTION IS INCLUDED) FOR THE TEMPORARY ROADWAY AND REMOVAL THEREOF, WHEN IT IS NO LONGER NEEDED. IF A BID ITEM FOR DETOUR CONSTRUCTION IS INCLUDED, GRADING AND DRAINAGE WILL BE PAID FOR IN THE BID ITEM "DETOUR CONSTRUCTION".
 - ALL LABOR AND MATERIALS NECESSARY FOR CONSTRUCTION AND MAINTENANCE OF TRAFFIC CONTROL DEVICES AND MARKINGS.
 - ALL FLAGPERSONS AND TRAFFIC CONTROL DEVICES SUCH AS, BUT NOT LIMITED TO, FLASHERS, SIGNS, BARRICADES AND VERTICAL PANELS, PLASTIC DRUMS (STEEL DRUMS WILL NOT BE PERMITTED) AND CONES NECESSARY FOR THE CONTROL AND PROTECTION OF VEHICULAR AND PEDESTRIAN TRAFFIC AS SPECIFIED IN THESE NOTES, THE PLANS, THE MUTCD OR THE ENGINEER.
- ANY TEMPORARY TRAFFIC CONTROL ITEMS, DEVICES, MATERIALS AND INCIDENTALS SHALL REMAIN THE PROPERTY OF THE CONTRACTOR WHEN NO LONGER NEEDED.
- THE CONTRACTOR SHALL MAINTAIN A TWO-LANE TRAVELED WAY WITH A MINIMUM LANE WIDTH OF 11 FEET. HOWEVER, DURING WORKING HOURS, ONE-WAY TRAFFIC MAY BE ALLOWED AT THE DISCRETION OF THE ENGINEER, PROVIDED ADEQUATE SIGNING AND A FLAGPERSON ARE AT THE LOCATION.
- THE CONTRACTOR SHALL COMPLETELY COVER ANY SIGNS, EITHER EXISTING, PERMANENT OR TEMPORARY, WHICH DO NOT PROPERLY APPLY TO THE CURRENT TRAFFIC PHASING, AND SHALL MAINTAIN THE COVERING UNTIL THE SIGNS ARE APPLICABLE OR ARE REMOVED.
- IN GENERAL, ALL TRAFFIC CONTROL DEVICES SHALL BE PLACED STARTING AND PROCEEDING IN THE DIRECTION OF THE FLOW OF TRAFFIC AND REMOVED STARTING AND PROCEEDING IN THE DIRECTION OPPOSITE THE FLOW OF TRAFFIC.
- THE ENGINEER AND THE CONTRACTOR, OR THEIR AUTHORIZED REPRESENTATIVES, SHALL REVIEW THE SIGNING BEFORE TRAFFIC IS ALLOWED TO USE ANY LANE CLOSURES, CROSSOVERS OR DETOURS. ALL SIGNING SHALL BE APPROVED BY THE ENGINEER BEFORE WORK CAN BE STARTED BY THE CONTRACTOR.
- IF THE CONTRACTOR DESIRES TO DEVIATE FROM THE TRAFFIC CONTROL SCHEME AND CONSTRUCTION SCHEDULE OUTLINED IN THESE PLANS AND THIS PROPOSAL, HE SHALL PREPARE AN ALTERNATE PLAN AND PRESENT IT IN WRITING TO THE ENGINEER. THIS ALTERNATE PLAN CAN BE USED ONLY AFTER REVIEW AND APPROVAL OF THE DIVISIONS OF TRAFFIC, DESIGN AND CONSTRUCTION, AND THE FEDERAL HIGHWAY ADMINISTRATION, WHERE APPLICABLE.
- IF TRAFFIC SHOULD BE STOPPED DUE TO CONSTRUCTION OPERATIONS AND AN EMERGENCY VEHICLE ON AN OFFICIAL EMERGENCY RUN ARRIVES AT THE SCENE, THE CONTRACTOR SHALL MAKE THE PROVISIONS FOR THE PASSAGE OF THAT VEHICLE AS QUICKLY AS POSSIBLE.
- ALL SIGNS NECESSARY FOR A MARKED DETOUR WILL BE PROVIDED BY THE CONTRACTOR AS REQUIRED BY STANDARD DRAWINGS AND THE MUTCD. SIGNS OUTSIDE THE PROJECT LIMITS SHALL BE PAID FOR BY THE SQUARE FOOT. THIS QUANTITY SHALL INCLUDE SIGN MOUNTING HARDWARE AND POSTS.

PAVEMENT DROP-OFF

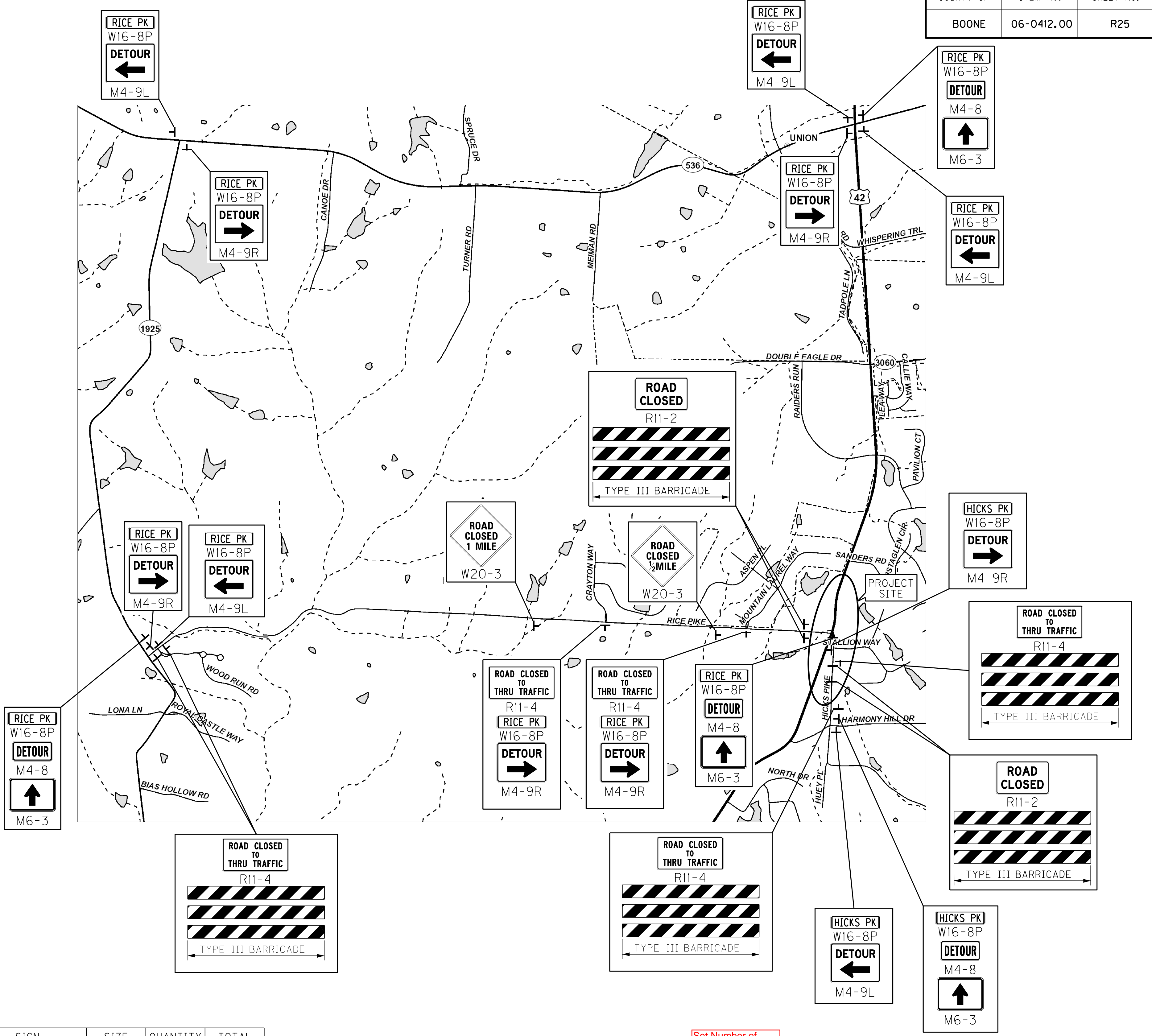
A PAVEMENT EDGE THAT TRAFFIC IS NOT EXPECTED TO CROSS, EXCEPT ACCIDENTALLY, SHOULD BE TREATED AS FOLLOWS:

- LESS THAN TWO INCHES - NO PROTECTION REQUIRED. WARNING SIGNS SHOULD BE PLACED IN ADVANCE AND THROUGHOUT THE DROP-OFF AREA.
- TWO TO FOUR INCHES - PLASTIC DRUMS, VERTICAL PANELS OR BARRICADES EVERY 100 FEET ON TANGENT SECTIONS FOR SPEEDS OF 50 MPH OR GREATER. CONES MAY BE USED IN PLACE OF PLASTIC DRUMS, PANELS AND BARRICADES DURING DAYLIGHT HOURS. FOR TANGENT SECTIONS WITH SPEEDS LESS THAN 50 MPH AND FOR CURVES, DEVICES SHOULD BE PLACED EVERY 50 FEET. SPACING OF DEVICES ON TAPERED SECTIONS SHOULD BE IN ACCORDANCE WITH THE MANUAL ON UNIFORM TRAFFIC CONTROL DEVICES, CURRENT EDITION.
- GREATER THAN FOUR INCHES - POSITIVE SEPARATION OR WEDGE WITH 3:1 OR FLATTER SLOPE NEEDED. IF THERE IS FIVE FEET OR MORE DISTANCE BETWEEN THE EDGE OF THE PAVEMENT AND THE DROP-OFF, THEN DRUMS, PANEL, OR BARRICADES MAY BE USED. IF THE DROP-OFF IS GREATER THAN 12 INCHES, POSITIVE SEPARATION IS STRONGLY ENCOURAGED. IF CONCRETE BARRIERS ARE USED, SPECIAL REFLECTIVE DEVICES OR STEADY BURN LIGHTS SHOULD BE USED FOR OVERNIGHT INSTALLATIONS.

FOR TEMPORARY CONDITIONS, DROP-OFFS GREATER THAN FOUR INCHES MAY BE PROTECTED WITH PLASTIC DRUMS, VERTICAL PANELS OR BARRICADES FOR SHORT DISTANCES DURING DAYLIGHT HOURS WHILE WORK IS BEING DONE IN THE DROP-OFF AREA.

LESSER TREATMENTS THAN THOSE DESCRIBED ABOVE MAY BE CONSIDERED FOR LOW-VOLUME LOCAL STREETS.

PAYMENT WILL BE ALLOWED FOR DGA MATERIAL USED FOR WEDGING.



LOCATION	SIGN CODE	SIZE (INCHES)	QUANTITY (EACH)	TOTAL (SQ FT)
AS SHOWN	• R11-2	48x30	4	40
AS SHOWN	• R11-4	60x30	6	75
AS SHOWN	W16-8P (HICKS PK)	60x8	3	10
AS SHOWN	W16-8P (RICE PK)	54x8	12	36
AS SHOWN	M4-9R	30x24	6	30
AS SHOWN	M4-9L	30x24	5	25
AS SHOWN	M6-3	21x15	4	9
AS SHOWN	M4-8	24x12	4	8
AS SHOWN	W20-3	36x36	2	18
TOTAL				251

• Sign used with Barricades Type 3 (8 Each)

Set Number of Officers to One

LAW ENFORCEMENT OFFICERS
 POLICE SUPPORT SHALL BE A UNIT CONSISTING OF AN OFF-DUTY POLICEMAN FROM ANY POLICE FORCE AGENCY IN BOONE COUNTY, KENTUCKY AND A POLICE CAR EQUIPPED WITH FLASHING BLUE LIGHTS. IT IS ANTICIPATED THAT APPROXIMATELY ONE (1) OFFICERS WILL BE REQUIRED FOR EACH CLOSURE SET UP. THE OFFICERS WILL BE PLACED AT THE DISCRETION OF THE ENGINEER. POLICE SUPPORT WILL BE MEASURED AND PAID ON A PER HOUR BASIS FOR EACH OFFICER AND POLICE VEHICLE.

REASONABLE MEANS OF INGRESS AND EGRESS SHALL BE MAINTAINED TO ALL PROPERTIES WITHIN THE PROJECT LIMITS. ACCESS TO FIRE HYDRANTS MUST ALSO BE MAINTAINED AT ALL TIMES.

SCALE: 1" = NA

**US 42 AT RICE & HICKS PIKE
 MAINTENANCE OF TRAFFIC
 DETOUR SIGNAGE**

FILE NAME: G:\PWORK\SCOTT.GABBARD\114233\RO2500MT_ADDENDUM.DGN
 USER: scott.gabbard
 DATE PLOTTED: September 20, 2017
 E-SHEET NAME: RO2500MT
 MicroStation v8.11.9.832

GENERAL NOTES

- TRAFFIC SHALL BE MAINTAINED IN ACCORDANCE WITH THE MANUAL ON UNIFORM TRAFFIC CONTROL DEVICES, THE STANDARD SPECIFICATIONS FOR ROAD AND BRIDGE CONSTRUCTION AND THE STANDARD DRAWINGS, CURRENT EDITIONS.
- EXCEPT FOR THE ROADWAY AND TRAFFIC CONTROL BID ITEMS LISTED, ALL ITEMS OF WORK NECESSARY TO MAINTAIN AND CONTROL TRAFFIC WILL BE PAID AT THE LUMP SUM BID PRICE TO 'MAINTAIN AND CONTROL TRAFFIC' AS SET FORTH IN THE CURRENT STANDARD SPECIFICATIONS FOR ROAD AND BRIDGE CONSTRUCTION UNLESS OTHERWISE PROVIDED FOR IN THESE NOTES. THE LUMP SUM BID TO 'MAINTAIN AND CONTROL TRAFFIC' SHALL ALSO INCLUDE, BUT IS NOT LIMITED TO, THE FOLLOWING ITEMS AND OPERATIONS:
 - ALL GRADING AND NECESSARY DRAINAGE (UNLESS A BID ITEM FOR DETOUR CONSTRUCTION IS INCLUDED) FOR THE TEMPORARY ROADWAY AND REMOVAL THEREOF, WHEN IT IS NO LONGER NEEDED. IF A BID ITEM FOR DETOUR CONSTRUCTION IS INCLUDED, GRADING AND DRAINAGE WILL BE PAID FOR IN THE BID ITEM "DETOUR CONSTRUCTION".
 - ALL LABOR AND MATERIALS NECESSARY FOR CONSTRUCTION AND MAINTENANCE OF TRAFFIC CONTROL DEVICES AND MARKINGS.
 - ALL FLAGPERSONS AND TRAFFIC CONTROL DEVICES SUCH AS, BUT NOT LIMITED TO, FLASHERS, SIGNS, BARRICADES AND VERTICAL PANELS, PLASTIC DRUMS (STEEL DRUMS WILL NOT BE PERMITTED) AND CONES NECESSARY FOR THE CONTROL AND PROTECTION OF VEHICULAR AND PEDESTRIAN TRAFFIC AS SPECIFIED IN THESE NOTES, THE PLANS, THE MUTCD OR THE ENGINEER.
- ANY TEMPORARY TRAFFIC CONTROL ITEMS, DEVICES, MATERIALS AND INCIDENTALS SHALL REMAIN THE PROPERTY OF THE CONTRACTOR WHEN NO LONGER NEEDED.
- THE CONTRACTOR SHALL MAINTAIN A TWO-LANE TRAVELED WAY WITH A MINIMUM LANE WIDTH OF 11 FEET. HOWEVER, DURING WORKING HOURS, ONE-WAY TRAFFIC MAY BE ALLOWED AT THE DISCRETION OF THE ENGINEER, PROVIDED ADEQUATE SIGNING AND A FLAGPERSON ARE AT THE LOCATION.
- THE CONTRACTOR SHALL COMPLETELY COVER ANY SIGNS, EITHER EXISTING, PERMANENT OR TEMPORARY, WHICH DO NOT PROPERLY APPLY TO THE CURRENT TRAFFIC PHASING, AND SHALL MAINTAIN THE COVERING UNTIL THE SIGNS ARE APPLICABLE OR ARE REMOVED.
- IN GENERAL, ALL TRAFFIC CONTROL DEVICES SHALL BE PLACED STARTING AND PROCEEDING IN THE DIRECTION OF THE FLOW OF TRAFFIC AND REMOVED STARTING AND PROCEEDING IN THE DIRECTION OPPOSITE THE FLOW OF TRAFFIC.
- THE ENGINEER AND THE CONTRACTOR, OR THEIR AUTHORIZED REPRESENTATIVES, SHALL REVIEW THE SIGNING BEFORE TRAFFIC IS ALLOWED TO USE ANY LANE CLOSURES, CROSSOVERS OR DETOURS. ALL SIGNING SHALL BE APPROVED BY THE ENGINEER BEFORE WORK CAN BE STARTED BY THE CONTRACTOR.
- IF THE CONTRACTOR DESIRES TO DEVIATE FROM THE TRAFFIC CONTROL SCHEME AND CONSTRUCTION SCHEDULE OUTLINED IN THESE PLANS AND THIS PROPOSAL, HE SHALL PREPARE AN ALTERNATE PLAN AND PRESENT IT IN WRITING TO THE ENGINEER. THIS ALTERNATE PLAN CAN BE USED ONLY AFTER REVIEW AND APPROVAL OF THE DIVISIONS OF TRAFFIC, DESIGN AND CONSTRUCTION, AND THE FEDERAL HIGHWAY ADMINISTRATION, WHERE APPLICABLE.
- IF TRAFFIC SHOULD BE STOPPED DUE TO CONSTRUCTION OPERATIONS AND AN EMERGENCY VEHICLE ON AN OFFICIAL EMERGENCY RUN ARRIVES AT THE SCENE, THE CONTRACTOR SHALL MAKE THE PROVISIONS FOR THE PASSAGE OF THAT VEHICLE AS QUICKLY AS POSSIBLE.
- ALL SIGNS NECESSARY FOR A MARKED DETOUR WILL BE PROVIDED BY THE CONTRACTOR AS REQUIRED BY STANDARD DRAWINGS AND THE MUTCD. SIGNS OUTSIDE THE PROJECT LIMITS SHALL BE PAID FOR BY THE SQUARE FOOT. THIS QUANTITY SHALL INCLUDE SIGN MOUNTING HARDWARE AND POSTS.

PAVEMENT DROP-OFF

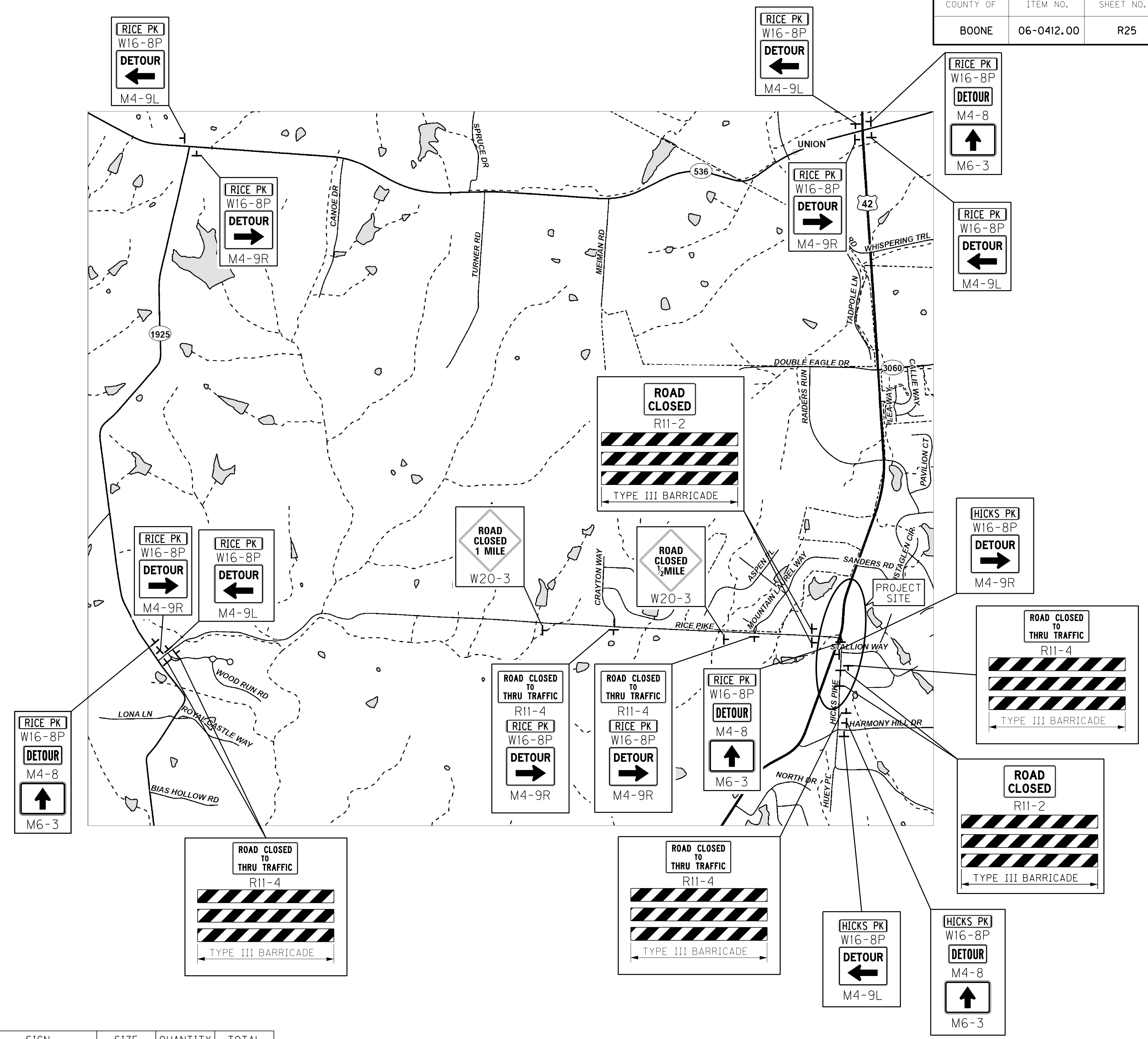
A PAVEMENT EDGE THAT TRAFFIC IS NOT EXPECTED TO CROSS, EXCEPT ACCIDENTALLY, SHOULD BE TREATED AS FOLLOWS:

- LESS THAN TWO INCHES - NO PROTECTION REQUIRED. WARNING SIGNS SHOULD BE PLACED IN ADVANCE AND THROUGHOUT THE DROP-OFF AREA.
- TWO TO FOUR INCHES - PLASTIC DRUMS, VERTICAL PANELS OR BARRICADES EVERY 100 FEET ON TANGENT SECTIONS FOR SPEEDS OF 50 MPH OR GREATER. CONES MAY BE USED IN PLACE OF PLASTIC DRUMS, PANELS AND BARRICADES DURING DAYLIGHT HOURS. FOR TANGENT SECTIONS WITH SPEEDS LESS THAN 50 MPH AND FOR CURVES, DEVICES SHOULD BE PLACED EVERY 50 FEET. SPACING OF DEVICES ON TAPERED SECTIONS SHOULD BE IN ACCORDANCE WITH THE MANUAL ON UNIFORM TRAFFIC CONTROL DEVICES, CURRENT EDITION.
- GREATER THAN FOUR INCHES - POSITIVE SEPARATION OR WEDGE WITH 3:1 OR FLATTER SLOPE NEEDED. IF THERE IS FIVE FEET OR MORE DISTANCE BETWEEN THE EDGE OF THE PAVEMENT AND THE DROP-OFF, THEN DRUMS, PANEL, OR BARRICADES MAY BE USED. IF THE DROP-OFF IS GREATER THAN 12 INCHES, POSITIVE SEPARATION IS STRONGLY ENCOURAGED. IF CONCRETE BARRIERS ARE USED, SPECIAL REFLECTIVE DEVICES OR STEADY BURN LIGHTS SHOULD BE USED FOR OVERNIGHT INSTALLATIONS.

FOR TEMPORARY CONDITIONS, DROP-OFFS GREATER THAN FOUR INCHES MAY BE PROTECTED WITH PLASTIC DRUMS, VERTICAL PANELS OR BARRICADES FOR SHORT DISTANCES DURING DAYLIGHT HOURS WHILE WORK IS BEING DONE IN THE DROP-OFF AREA.

LESSER TREATMENTS THAN THOSE DESCRIBED ABOVE MAY BE CONSIDERED FOR LOW-VOLUME LOCAL STREETS.

PAYMENT WILL BE ALLOWED FOR DGA MATERIAL USED FOR WEDGING.



LOCATION	SIGN CODE	SIZE (INCHES)	QUANTITY (EACH)	TOTAL (SQ FT)
AS SHOWN	• R11-2	48x30	4	40
AS SHOWN	• R11-4	60x30	6	75
AS SHOWN	W16-8P (HICKS PK)	60x8	3	10
AS SHOWN	W16-8P (RICE PK)	54x8	12	36
AS SHOWN	M4-9R	30x24	6	30
AS SHOWN	M4-9L	30x24	5	25
AS SHOWN	M6-3	21x15	4	9
AS SHOWN	M4-8	24x12	4	8
AS SHOWN	W20-3	36x36	2	18
TOTAL				251

• Sign used with Barricades Type 3 (8 Each)

LAW ENFORCEMENT OFFICERS

POLICE SUPPORT SHALL BE A UNIT CONSISTING OF AN OFF-DUTY POLICEMAN FROM ANY POLICE FORCE AGENCY IN BOONE COUNTY, KENTUCKY AND A POLICE CAR EQUIPPED WITH FLASHING BLUE LIGHTS. IT IS ANTICIPATED THAT APPROXIMATELY ONE (1) OFFICERS WILL BE REQUIRED FOR EACH CLOSURE SET UP. THE OFFICERS WILL BE PLACED AT THE DISCRETION OF THE ENGINEER. POLICE SUPPORT WILL BE MEASURED AND PAID ON A PER HOUR BASIS FOR EACH OFFICER AND POLICE VEHICLE.

REASONABLE MEANS OF INGRESS AND EGRESS SHALL BE MAINTAINED TO ALL PROPERTIES WITHIN THE PROJECT LIMITS. ACCESS TO FIRE HYDRANTS MUST ALSO BE MAINTAINED AT ALL TIMES.

SCALE: 1" = NA

**US 42 AT RICE & HICKS PIKE
MAINTENANCE OF TRAFFIC
DETOUR SIGNAGE**

FILE NAME: G:\PWORK\SCOTT.GABBARD\114233\RO2500MT_ADDENDUM.DGN
 USER: scott.gabbard
 DATE PLOTTED: September 20, 2017
 E-SHEET NAME: RO2500MT
 MicroStation v8.11.9.832

PIPE DRAINAGE SHEET 1a of 3

COUNTY OF	ITEM NO.	SHEET NO.
BOONE	06-0412.00	R42a

STORM SEWER PIPE

L I N E A R F E E T

DESIGN
PH
LEVEL

MAXIMUM
COVER
HEIGHT

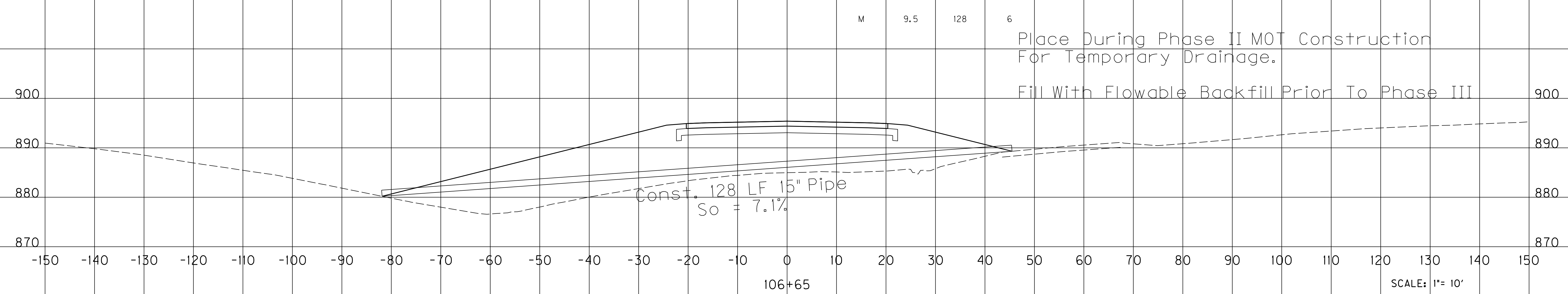
15" PIPE

SAFELOADING

LF

CU YD

FILE NAME: C:\PI\WORK\SCOTT_GABBARD\114233\RO420APD_ADDENDUM.DGN
 USER: scott.gabbard
 DATE PLOTTED: September 19, 2017
 E-SHEET NAME: RO420APD
 MicroStation v8.11.9.832



SCALE: 1"= 10'
 PIPE SECTION ADDENDUM
 STA. 106+65
 US 42

PIPE DRAINAGE SHEET 1a of 3

COUNTY OF	ITEM NO.	SHEET NO.
BOONE	06-0412.00	R42a

STORM SEWER PIPE

L I N E A R F E E T

DESIGN
PH
LEVEL

MAXIMUM
COVER
HEIGHT

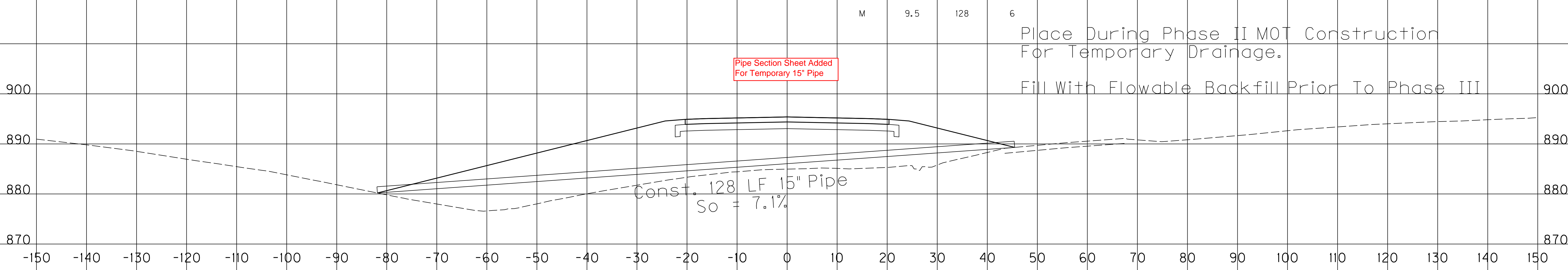
15" PIPE

SAFELOADING

LF

CU YD

FILE NAME: C:\PI\WORK\SCOTT_GABBAR\RD11423\RD420APD_ADDENDUM.DGN
 USER: scott.gabbard
 DATE PLOTTED: September 19, 2017
 E-SHEET NAME: RD420APD
 MicroStation v8.11.9.832



SCALE: 1" = 10'

PIPE SECTION ADDENDUM
 STA. 106+65
 US 42

PROPOSAL BID ITEMS

171035

Page 1 of 3

Report Date 9/21/17

Section: 0001 - PAVING

LINE	BID CODE	ALT	DESCRIPTION	QUANTITY	UNIT	UNIT PRIC	FP	AMOUNT
0010	00003		CRUSHED STONE BASE	2,892.00	TON		\$	
0020	00005		GEOGRID REINFORCEMENT FOR SUBGRADE	11,874.00	SQYD		\$	
0030	00078		CRUSHED AGGREGATE SIZE NO 2	7,361.00	TON		\$	
0040	00190		LEVELING & WEDGING PG64-22	393.00	TON		\$	
0050	00214		CL3 ASPH BASE 1.00D PG64-22	5,713.00	TON		\$	
0060	00388		CL3 ASPH SURF 0.38B PG64-22	1,039.00	TON		\$	
0070	01007		PERFORATED PIPE EDGE DRAIN-8 IN	4,150.00	LF		\$	
0080	01012		NON-PERFORATED PIPE-8 IN	87.00	LF		\$	
0090	01015		INSPECT & CERTIFY EDGE DRAIN SYSTEM	1.00	LS		\$	
0100	01030		PERF PIPE HEADWALL TY 3-8 IN	5.00	EACH		\$	
0110	01742		CORED HOLE DRAINAGE BOX CON-8 IN	3.00	EACH		\$	
0120	02099		CEM CONC ENT PAVEMENT-6 IN	838.00	SQYD		\$	
0130	02599		FABRIC-GEOTEXTILE TYPE IV	35,234.00	SQYD		\$	
0140	02677		ASPHALT PAVE MILLING & TEXTURING	286.00	TON		\$	

Section: 0002 - ROADWAY

LINE	BID CODE	ALT	DESCRIPTION	QUANTITY	UNIT	UNIT PRIC	FP	AMOUNT
0150	01585		REMOVE DROP BOX INLET	1.00	EACH		\$	
0160	02014		BARRICADE-TYPE III	13.00	EACH		\$	
0170	02091		REMOVE PAVEMENT	1,501.00	SQYD		\$	
0180	02159		TEMP DITCH	1,900.00	LF		\$	
0190	02160		CLEAN TEMP DITCH	950.00	LF		\$	
0200	02200		ROADWAY EXCAVATION	5,924.00	CUYD		\$	
0210	02230		EMBANKMENT IN PLACE	38,871.00	CUYD		\$	
0220	02242		WATER	50.00	MGAL		\$	
0230	02429		RIGHT-OF-WAY MONUMENT TYPE 1	26.00	EACH		\$	
0240	02545		CLEARING AND GRUBBING 8.7 ACRES	1.00	LS		\$	
0250	02562		TEMPORARY SIGNS	350.00	SQFT		\$	
0260	02585		EDGE KEY	105.00	LF		\$	
0270	02600		FABRIC GEOTEXTILE TY IV FOR PIPE	1,650.00	SQYD	\$2.00	\$	\$3,300.00
0280	02650		MAINTAIN & CONTROL TRAFFIC	1.00	LS		\$	
0290	02653		LANE CLOSURE	2.00	EACH		\$	
0300	02671		PORTABLE CHANGEABLE MESSAGE SIGN	6.00	EACH		\$	
0310	02676		MOBILIZATION FOR MILL & TEXT	1.00	LS		\$	
0320	02690		SAFELoading (REVISED: 9-21-17)	12.00	CUYD		\$	
0330	02697		EDGELINE RUMBLE STRIPS	4,420.00	LF		\$	
0340	02701		TEMP SILT FENCE	1,900.00	LF		\$	
0350	02703		SILT TRAP TYPE A	5.00	EACH		\$	
0360	02704		SILT TRAP TYPE B	50.00	EACH		\$	
0370	02705		SILT TRAP TYPE C	25.00	EACH		\$	
0380	02706		CLEAN SILT TRAP TYPE A	5.00	EACH		\$	
0390	02707		CLEAN SILT TRAP TYPE B	50.00	EACH		\$	
0400	02708		CLEAN SILT TRAP TYPE C	25.00	EACH		\$	

PROPOSAL BID ITEMS

171035

Page 2 of 3

Report Date 9/21/17

LINE	BID CODE	ALT	DESCRIPTION	QUANTITY	UNIT	UNIT PRIC	FP	AMOUNT
0410	02726		STAKING	1.00	LS		\$	
0420	05952		TEMP MULCH	37,510.00	SQYD		\$	
0430	05953		TEMP SEEDING AND PROTECTION	28,072.00	SQYD		\$	
0440	05963		INITIAL FERTILIZER	2.00	TON		\$	
0450	05964		20-10-10 FERTILIZER	3.00	TON		\$	
0460	05985		SEEDING AND PROTECTION	21,929.00	SQYD		\$	
0470	05990		SODDING	17,867.00	SQYD		\$	
0480	06405		SBM ALUMINUM PANEL SIGNS	48.00	SQFT		\$	
0490	06411		STEEL POST TYPE 2	90.00	LF		\$	
0500	06510		PAVE STRIPING-TEMP PAINT-4 IN	6,000.00	LF		\$	
0510	06514		PAVE STRIPING-PERM PAINT-4 IN	12,577.00	LF		\$	
0520	06530		PAVE STRIPING REMOVAL-4 IN	10,000.00	LF		\$	
0530	06568		PAVE MARKING-THERMO STOP BAR-24IN	96.00	LF		\$	
0540	06569		PAVE MARKING-THERMO CROSS-HATCH	5,140.00	SQFT		\$	
0550	06574		PAVE MARKING-THERMO CURV ARROW	15.00	EACH		\$	
0560	06593		PAVEMENT MARKER TYPE V-B Y/R	40.00	EACH		\$	
0570	10020NS		FUEL ADJUSTMENT	23,777.00	DOLL	\$1.00	\$	\$23,777.00
0580	10030NS		ASPHALT ADJUSTMENT	27,934.00	DOLL	\$1.00	\$	\$27,934.00
0585	20411ED		LAW ENFORCEMENT OFFICER (ADDED: 9-21-17)	12.00	HOUR		\$	
0590	23274EN11F		TURF REINFORCEMENT MAT 1	4,926.00	SQYD		\$	

Section: 0003 - DRAINAGE

LINE	BID CODE	ALT	DESCRIPTION	QUANTITY	UNIT	UNIT PRIC	FP	AMOUNT
0600	00440		ENTRANCE PIPE-15 IN	439.00	LF		\$	
0610	00441		ENTRANCE PIPE-18 IN	68.00	LF		\$	
0619	00461		CULVERT PIPE-15 IN (ADDED: 9-21-17)	128.00	LF		\$	
0620	00462		CULVERT PIPE-18 IN	75.00	LF		\$	
0630	00464		CULVERT PIPE-24 IN	401.00	LF		\$	
0640	00521		STORM SEWER PIPE-15 IN	196.00	LF		\$	
0650	01202		PIPE CULVERT HEADWALL-15 IN	1.00	EACH		\$	
0660	01208		PIPE CULVERT HEADWALL-24 IN	3.00	EACH		\$	
0670	01371		METAL END SECTION TY 1-18 IN	4.00	EACH		\$	
0680	01450		S & F BOX INLET-OUTLET-18 IN	2.00	EACH		\$	
0690	01451		S & F BOX INLET-OUTLET-24 IN	2.00	EACH		\$	
0700	01496		DROP BOX INLET TYPE 3	3.00	EACH		\$	
0710	02483		CHANNEL LINING CLASS II	86.00	TON		\$	
0720	21799EN		BORE AND JACK PIPE-24 IN	168.00	LF		\$	
0730	24575ES610		HEADWALL PRECAST DRIVEWAY-15 IN	26.00	EACH		\$	
0740	24814EC		PIPELINE INSPECTION	667.00	LF		\$	

Section: 0004 - UTILITY-GAS

LINE	BID CODE	ALT	DESCRIPTION	QUANTITY	UNIT	UNIT PRIC	FP	AMOUNT
0750	16076		G SPECIAL ITEM	3.00	EACH		\$	

PROPOSAL BID ITEMS

171035

Page 3 of 3

Report Date 9/21/17

LINE	BID CODE	ALT	DESCRIPTION	QUANTITY	UNIT	UNIT PRIC	FP	AMOUNT
0760	16518		G PIPE POLYETHYLENE/PLASTIC 06 INCH INST	1,915.00	LF		\$	
0770	16531		G SERVICE LONG SIDE 1 OR 1-1/4 INCH INST	1.00	EACH		\$	
0780	16536		G SERVICE SHORT SIDE 1 OR 1-1/4 INCH INST	2.00	EACH		\$	
0790	20818ND		GAS UTILITY COORDINATION	1.00	LS		\$	

Section: 0005 - WATERLINE

LINE	BID CODE	ALT	DESCRIPTION	QUANTITY	UNIT	UNIT PRIC	FP	AMOUNT
0800	14018		W FIRE HYDRANT ADJUST	1.00	EACH		\$	
0810	14019		W FIRE HYDRANT ASSEMBLY	3.00	EACH		\$	
0820	14020		W FIRE HYDRANT RELOCATE	5.00	EACH		\$	
0830	14029		W METER ADJUST	2.00	EACH		\$	
0840	14030		W METER RELOCATE	14.00	EACH		\$	
0850	14037		W PIPE DUCTILE IRON 08 INCH	1,512.00	LF		\$	
0860	14040		W PIPE DUCTILE IRON 16 INCH	1,260.00	LF		\$	
0870	14076		W REMOVE TRANSITE (AC) PIPE	80.00	LF		\$	
0880	14090		W TAPPING SLEEVE AND VALVE SIZE 2	1.00	EACH		\$	
0890	14095		W TIE-IN 08 INCH	8.00	EACH		\$	
0900	14098		W TIE-IN 16 INCH	2.00	EACH		\$	
0910	14106		W VALVE 08 INCH	3.00	EACH		\$	
0920	14109		W VALVE 16 INCH	6.00	EACH		\$	
0930	14113		W VALVE BOX ADJUST	2.00	EACH		\$	
0940	14118		W VALVE CUT-IN 08 INCH	3.00	EACH		\$	
0950	14121		W VALVE CUT-IN 16 INCH	1.00	EACH		\$	
0960	14148		W SERV COPPER LONG SIDE 3/4 IN	7.00	EACH		\$	
0970	14152		W SERV COPPER SHORT SIDE 3/4 IN	9.00	EACH		\$	

Section: 0006 - DEMOBILIZATION &/OR MOBILIZATION

LINE	BID CODE	ALT	DESCRIPTION	QUANTITY	UNIT	UNIT PRIC	FP	AMOUNT
0980	02568		MOBILIZATION	1.00	LS		\$	
0990	02569		DEMOBILIZATION	1.00	LS		\$	